

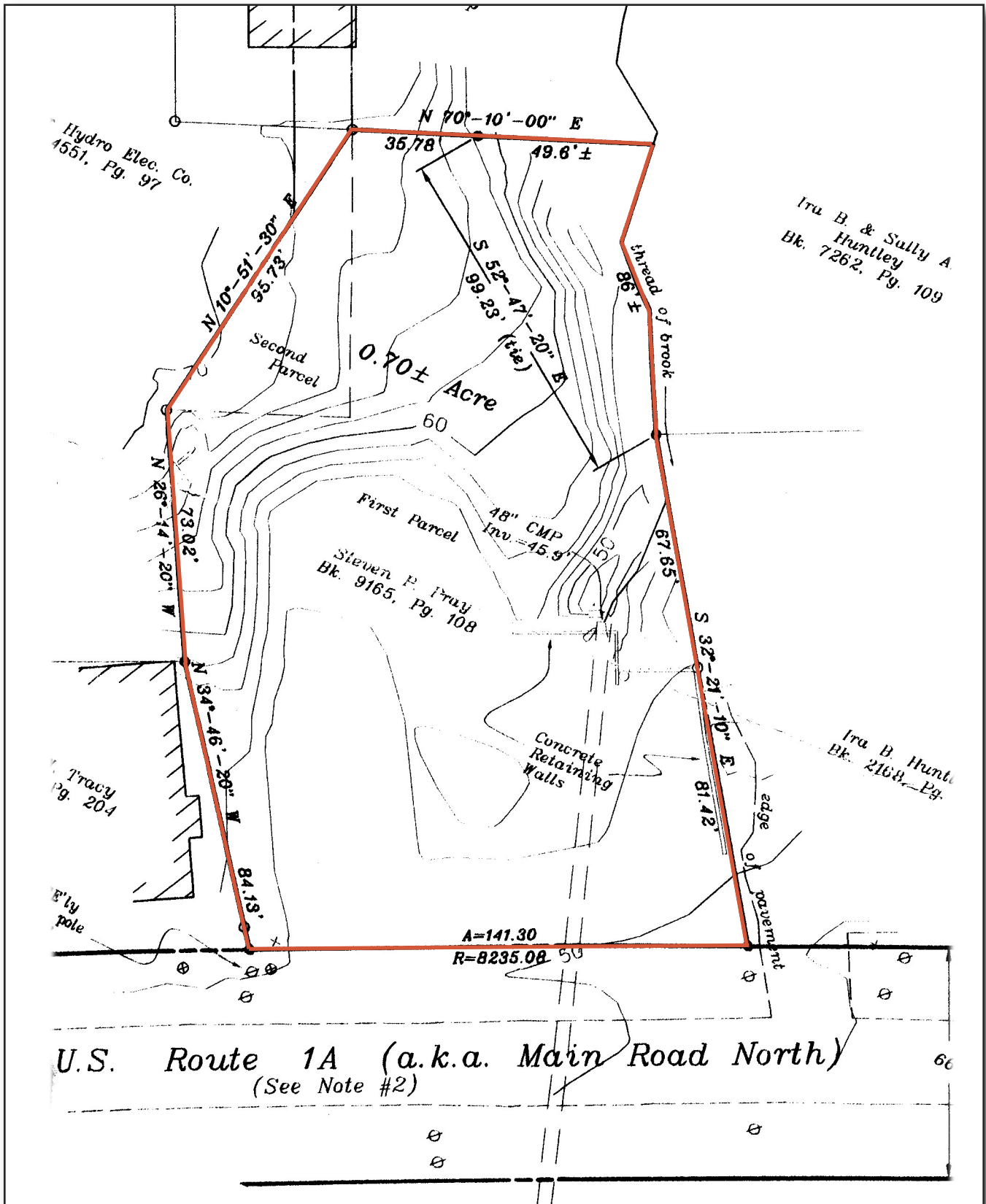
## Commercial Land For Sale

Main Road North  
Hampden, Maine

Great location along Route 1-A, near the Bangor City line. This parcel contains .70+/- acres with 141+/- feet of road frontage. Ideal for multi-family or commercial enterprise.

Presented at: \$119,000.

# Boundary Survey · Main Road North · Hampden, Maine



MAINE COMMERCIAL REALTY is the agent for the Seller. Every agent has the duty to be fair to all parties. Any information given herewith has been obtained from sources we consider reliable. However, we are not responsible for errors, omissions, misstatement of facts, concealment of pertinent information, exaggeration, prior sale, withdrawal from the market, price change, mortgage commitment, terms or conditions.